

- Before equipment installation begins, please read instructions carefully and thoroughly.



IMPORTANT

1. After connecting the quick connector couple (please refer to the "INSTALLATION MANUAL" for details), pass drain hose and refrigerant pipes through the wall hole as shown in Fig.1.

NOTE: The quick connector parts must be placed outside of room. Use wall hole sleeve, cap and neoprene to seal the wall hole.

2. In order to minimize quick connector part air exposure, the sound deadening pads should be used during the installation as seen in Fig.2.



Fig.1



Fig.2

3. Wrap quick connectors with sound deadening pads, then pack the pads tightly as shown in Fig.3.
4. Wrap the connectors with black insulation material. For the top exposed portion, use white insulation material and wrap completely as shown in Fig.4.
5. Finally, use electricians tape to wrap the refrigerant pipe and connecting cable together.

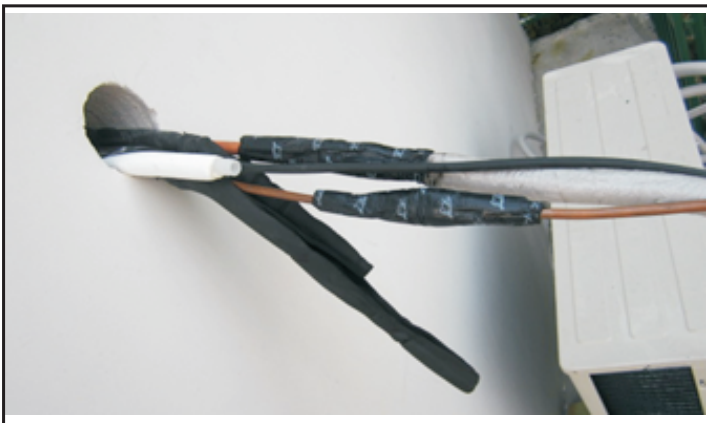


Fig.3



Fig.4



MRCOOL[®]
COMFORT MADE SIMPLE